

SECURITY CHIMNEYS SECURE VENT™ 4.5"
DIRECT VENT SYSTEM FOR LENNOX HEARTH
www.securitychimneys.com

INDEX

INTRODUCTION 13-2

SECURITY CHIMNEYS — SECURE VENT™ 4.5"

ADAPTER COMPONENTS 13-5

ATTIC RADIATION SHIELD 13-5

COLINEAR TERMINATION KITS 13-4

COMPRESSED FLEX VENT 13-4

ELBOWS 45°/90° 13-2

FIRESTOP 13-3

HEAT GUARD 13-4

LENGTHS — 4.5" INSIDE DIAMETER 13-2

MIL PAK SEALANT 13-5

RISER — HORIZONTAL 13-5

ROOF FLASHING 13-3

SHROUD KIT — HORIZONTAL, ROUND 13-3

STORM COLLAR 13-3

SUPPORT PLATE 13-4

TERMINATION CAP — HORIZONTAL, SQUARE 13-3

TERMINATION CAP — VERTICAL 13-3

TERMINATION CAPS WITH FLEX KIT — SQUARE 13-4

TERMINATIONS FOR FLEX VENT — VERTICAL 13-4

UNIVERSAL SUPPORT STRAP 13-4

ECCO is proud to be a member of:



SECURITY CHIMNEYS SECURE VENT™ 4.5"

www.securitychimneys.com

SECURITY CHIMNEYS SECURE VENT™ DIRECT VENT SYSTEM

Outstanding design features for superior performance

Air tight leak proof vent system for direct vent gas burning fireplaces and stoves.

Totally airtight, no leakage

- Laser-welded interior and exterior seam.
- No gaskets or silicone required.
- No pop rivets or crimped side seams for optimum aesthetic appeal.

New compression fit, twist-lock design

- Inner flue ultra tight metal-to-metal conical seal, outer flue compression fit.
- Three times tighter than industry standard.

Aluminized steel inner flue

- Less subject to deformation.
- Imparts more rigidity to the vent system.

30-Year Limited Warranty

Security Chimneys International guarantees Secure Vent™ with a 30-year limited replacement warranty.

Company Background

For over 35 years, Security Chimneys International has been a name synonymous with quality, innovation and value.

Security Chimneys are among the most widely used in North America. Their latest innovation, the Secure Vent™ Direct Venting System, is destined to become the new industry standard in direct venting systems.

Manufactured with state-of-the-art equipment, Secure Vent™ features a laser-welded interior and exterior seam that is three times tighter than competitive systems. A new compression fit twist-lock design and an ultra tight metal-to-metal conical seal for the inner flue eliminates the need for gaskets or silicone to achieve an airtight seal.

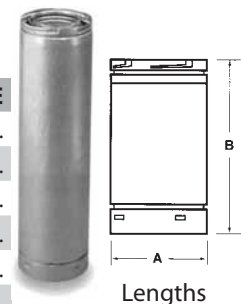
Secure Vent™ has an aluminized steel inner flue that is less subject to deformation and imparts more rigidity to the vent system. The unique spacer design eliminates the need for rivets or crimped side seams, thereby achieving optimum aesthetic appeal.



SECURITY CHIMNEYS — SECURE VENT™ 4.5"

LENGTHS — 4.5" INSIDE DIAMETER

STOCK #	MODEL	DESCRIPTION	A (")	B (")	PRICE
601800	77L70	SV4.5L6	7.5	5-3/4	P.O.A.
601801	77L71	SV4.5L12	7.5	11-3/4	P.O.A.
601803	77L72	SV4.5L24	7.5	22-3/4	P.O.A.
601804	77L73	SV4.5L36	7.5	35-3/4	P.O.A.
601805	77L74	SV4.5L48	7.5	47-3/4	P.O.A.
601808	77L75	SV4.5LA	Adjustable Length 2" - 7.5" — Rigid		P.O.A.



ELBOWS 45°/90°

STOCK #	MODEL	DESCRIPTION	PRICE
601810	77L76	SV4.5E45	P.O.A.
601811	77L77	SV4.5E90	P.O.A.



Elbow 45°

— E.&O.E. — All Prices F.O.B. Our Warehouse — Subject to Change Without Notice — All Taxes Extra —

SECURITY CHIMNEYS SECURE VENT™ 4.5"

www.securitychimneys.com

SECURITY CHIMNEYS — SECURE VENT™ 4.5" (cont'd)

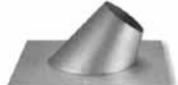
ROOF FLASHING

The roof flashing is needed with vertical installations. This component seals the vent lengths protruding from a flat or sloped roof and comes with a storm collar.

STOCK #	MODEL	DESCRIPTION	PRICE
601814	77L78	SV4.5F — Flat Flashing and Collar	P.O.A.
601815	77L79	SV4.5FA — Adjustable Flashing 1/12–7/12	P.O.A.
601816	77L80	SV4.5FB — Adjustable Flashing 7/12–12/12	P.O.A.



Flat Flashing and Collar



Adjustable Flashing 1/12–7/12



Adjustable Flashing 7/12–12/12

STORM COLLAR

Designed to fit over flashings and provide a watertight seal. Collar is included with each roof flashing.

STOCK #	MODEL	DESCRIPTION	PRICE
601818	77L81	SV4.5SC	P.O.A.

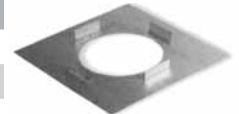


Storm Collar

FIRESTOP

Designed to protect surrounding materials when vent passes through ceiling or wall.

STOCK #	MODEL	DESCRIPTION	PRICE
601842	96K87/H2247	SV4.5VF — Vertical	P.O.A.
601840	96K80/H2246	SV4.5HF — Horizontal	P.O.A.



Firestop

TERMINATION CAP — HORIZONTAL, SQUARE

Suitable for high-wind applications.

STOCK #	MODEL	DESCRIPTION	PRICE
601849	H1968	SV4.5HT-2 — Square	P.O.A.
601874	94L10	SV4.5HTSS — Small Square	P.O.A.
601853	H5817	SV4.5-20SSWSK — Small Square, Long with Shield	P.O.A.
601856	H1969	SV4.5HT-2 — Square for Flex Vent	P.O.A.
601858	94L09	SF-HTSS Small — Square for Flex Vent	P.O.A.



Termination Cap — Square

TERMINATION CAP — VERTICAL

Suitable for high-wind applications.

STOCK #	MODEL	DESCRIPTION	PRICE
601851	H2152	SV4.5GV-1 — High Wind	P.O.A.

SHROUD KIT — HORIZONTAL, ROUND

Suitable for high-wind applications.

STOCK #	MODEL	DESCRIPTION	PRICE
601854	H5820	SV4.5HTSK — Round	P.O.A.

SECURITY CHIMNEYS SECURE VENT™ 4.5"

www.securitychimneys.com

SECURITY CHIMNEYS — SECURE VENT™ 4.5" (cont'd)

TERMINATION CAPS WITH FLEX KIT — SQUARE

STOCK #	MODEL	DESCRIPTION	PRICE
601830	77L87	SFKIT12S — Cap and 12" Flex	P.O.A.
601832	77L88	SFKIT18S — Cap and 18" Flex	P.O.A.
601834	77L89	SFKIT24S — Cap and 24" Flex	P.O.A.
601836	77L90	SFKIT36S — Cap and 36" Flex	P.O.A.
601838	77L91	SFKIT48S — Cap and 48" Flex	P.O.A.

COMPRESSED FLEX VENT

STOCK #	MODEL	DESCRIPTION	PRICE
C601700	98K03	SF12 — 12 ft. Compressed Flex Vent	P.O.A.
C601700	60L10	SF18 — 18 ft. Compressed Flex Vent	P.O.A.

TERMINATIONS FOR FLEX VENT — VERTICAL

STOCK #	MODEL	DESCRIPTION	PRICE
601876	56L74	SFVT30 — Flat to 6/12	P.O.A.
601877	56L75	SFVT45 — 6/12 to 12/12	P.O.A.

COLINEAR TERMINATION KITS

STOCK #	MODEL	DESCRIPTION	PRICE
601884	DV3FK25	Complete Kit includes: 25 ft. 3" Flex, Termination Cap, Flashing, (2) Locking Bands, (1) Sealant Tube	P.O.A.
601885	DV3FK35	Complete Kit includes: 35 ft. 3" Flex, Termination Cap, Flashing, (2) Locking Bands, (1) Sealant Tube	P.O.A.

HEAT GUARD

STOCK #	MODEL	DESCRIPTION	PRICE
C601700	87L02	SV4.5HGS for Square Terminations	P.O.A.

SUPPORT PLATE

STOCK #	MODEL	DESCRIPTION	PRICE
601848	96K92	SV4.5SP	P.O.A.

UNIVERSAL SUPPORT STRAP

This support is mostly used in offset situations.

STOCK #	MODEL	DESCRIPTION	PRICE
601844	96K93	SV4.5SU	P.O.A.



Universal Support Strap

— E.&O.E. — All Prices F.O.B. Our Warehouse — Subject to Change Without Notice — All Taxes Extra —

SECURITY CHIMNEYS SECURE VENT™ 4.5"

www.securitychimneys.com

SECURITY CHIMNEYS — SECURE VENT™ 4.5" (cont'd)

ATTIC RADIATION SHIELD

This cone shape component is used when the vent passes through an attic. It prevents insulation from seeping between the vent and the firestop while maintaining 1" clearance from surrounding combustible material.



Attic Radiation
Shield

STOCK #	MODEL	DESCRIPTION	PRICE
601847	H3907	SV4.5RSA	P.O.A.

RISER — HORIZONTAL

STOCK #	MODEL	DESCRIPTION	PRICE
601875	99L02	SV4.5HRK14 —Horizontal Riser 14"	P.O.A.
601878	99L03	SV4.5HRK36 —Horizontal Riser 36"	P.O.A.

ADAPTER COMPONENTS

STOCK #	MODEL	DESCRIPTION	PRICE
601866	87L00	SV4.5RF — Elite Series Collar Adapter (new to old) Adapts Secure-Vent Collar to old Lennox Rigid and Flex Vent	P.O.A.
601868	86L98	SV4.5RFF — Collar Adapter (old to new) Adapts old Lennox, Merit, and Elite Series Collars to Secure-Vent and Secure-Flex Chimney Components	P.O.A.

MIL PAK SEALANT

STOCK #	MODEL	DESCRIPTION	PRICE
705210	10K81	SFMP — Sealant-Tube — 300 ML	P.O.A.