

ACUDOR ACCESS DOORS

www.acudor.com

INDEX

ACCESS DOORS

FIRE RATED FOR WALLS – FB-5060 – PRIME COAT STEEL.....	9-4
FIRE RATED FOR WALLS AND CEILINGS – FW-5050 – PRIME COAT STEEL/STAINLESS STEEL	9-5
FLUSH	
DW-5040	9-7 – 9-8
PS-5030	9-7 – 9-8
RECESSED	
AP-5010.....	9-9
AT-5020	9-6
DW-5015	9-9
SECURITY – SD-6000	9-6
UNIVERSAL FLUSH FOR WALLS AND CEILINGS – UF-5000	
PRIME COAT STEEL	9-2
STAINLESS STEEL.....	9-3

NOTE: Although Floor Hatches/Roof Hatches, and Acudor Smoke Vents are not featured in this price list, they are available special order — P.O.A. Please contact your local ECCO Supply sales branch.

ECCO is proud to be a member of:



ASHRAE

American Society of
Heating, Refrigerating, and
Air-Conditioning Engineers, Inc.
www.ashrae.org



HRAI

Heating, Refrigeration
and Air Conditioning
Institute of Canada
www.hrai.ca



HARDI

Heating, Airconditioning &
Refrigeration Distributors
International
www.hardinet.org



SMACNA

Sheet Metal and Air
Conditioning Contractors'
National Association
www.smacna.org



SPIDA

Spiral Duct
Manufacturers
Association
www.spida.org

ACUDOR ACCESS DOORS

www.acudor.com

UNIVERSAL FLUSH ACCESS DOOR FOR WALLS AND CEILINGS — UF-5000 — PRIME COAT STEEL

Description

The Acudor **UF-5000** is an innovative universal flush access door for walls and ceilings. It is designed for installation in drywall, plaster, masonry, tile, or any flush surface. The door panel has rounded corners, which provides an architecturally pleasing appearance and is also a safety feature. The one piece trim flange will not rack, sag, or distort.

The unique continuous concealed hinge will not bind or corrode, allowing the door to operate freely time and time again.

For easy installation, the mounting frame is 1-1/4" deep, giving maximum clearance behind the door frame.



Specifications

Material 16" x 16" and smaller: 16 ga. door,
18 ga. mounting frame.

Over 16" x 16": 14 ga. door,
16 ga. mounting frame.

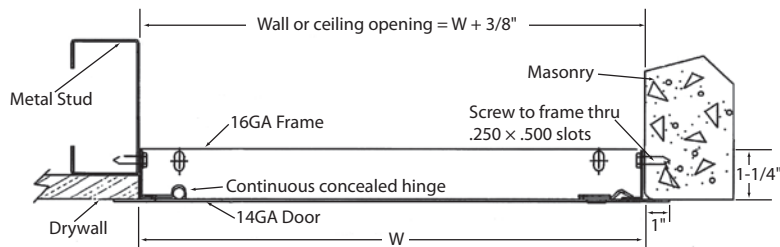
Door Flush to frame – rounded safety corners.

Frame One piece outer flange welded to mounting frame.

Hinge Continuous, concealed.

Latch Screwdriver operated cam latch.
Also available: cylinder lock and key, allen head latch, spanner head latch.

Finish Steel: 5 stage iron phosphate preparation with prime coat of grey baked enamel.



STOCK #	NOMINAL W x H ("")	OPENING SIZE ("")	NO. OF LATCHES	WEIGHT (LBS)	PRICE/EA
700902	6 x 6	6-3/8 x 6-3/8	1	2.0	\$68.00
700904	8 x 8	8-3/8 x 8-3/8	1	2.7	52.00
700906	8 x 12	8-3/8 x 12-3/8	1	3.6	88.00
700908	10 x 10	10-3/8 x 10-3/8	1	3.6	80.00
700912	12 x 12	12-3/8 x 12-3/8	1	4.7	60.00
700914	12 x 16	12-3/8 x 16-3/8	2	6.0	128.00
700916	12 x 18	12-3/8 x 18-3/8	2	7.0	141.00
700918	12 x 24	12-3/8 x 24-3/8	2	8.5	173.00
700920	14 x 14	14-3/8 x 14-3/8	1	6.2	130.00
700922	16 x 16	16-3/8 x 16-3/8	2	7.6	130.00
700924	16 x 24	16-3/8 x 24-3/8	2	12.5	218.00
700926	18 x 18	18-3/8 x 18-3/8	2	11.2	159.00
700928	18 x 24	18-3/8 x 24-3/8	2	15.0	198.00
700930	22 x 22	22-3/8 x 22-3/8	4	16.3	215.00
700932	24 x 24	24-3/8 x 24-3/8	4	18.0	220.00

– E.&O.E. – May not be in stock at all branches, if so please allow 10 days for delivery. –
– All Prices F.O.B. Our Warehouse – Subject to Change Without Notice – All Taxes Extra –

ACUDOR ACCESS DOORS

www.acudor.com

UNIVERSAL FLUSH ACCESS DOOR FOR WALLS AND CEILINGS — UF-5000 — STAINLESS STEEL

Description

The Acudor **UF-5000** is an innovative universal flush access door for walls and ceilings. It is designed for installation in drywall, plaster, masonry, tile, or any flush surface. The door panel has rounded corners, which provides an architecturally pleasing appearance and is also a safety feature. The one piece trim flange will not rack, sag, or distort.

The unique continuous concealed hinge will not bind or corrode, allowing the door to operate freely time and time again.

For easy installation, the mounting frame is 1-1/4" deep, giving maximum clearance behind the door frame.



Specifications

Material 16" x 16" and smaller: 16 ga. door,
18 ga. mounting frame.

Over 16" x 16": 14 ga. door,
16 ga. mounting frame.

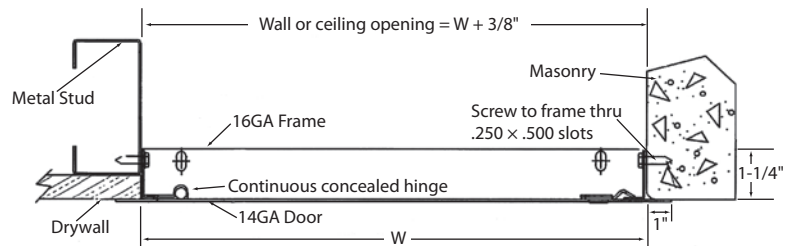
Door Flush to frame – rounded safety corners.

Frame One piece outer flange welded to mounting frame.

Hinge Continuous, concealed.

Latch Screwdriver operated cam latch.
Also available: cylinder lock and allen head latch, spanner head latch.

Finish Stainless Steel: Type 304 – #4 satin polish.



STOCK #	NOMINAL W x H (")	OPENING SIZE (")	NO. OF LATCHES	WEIGHT (LBS)	PRICE/EA
C700900	8 x 8	8-3/8 x 8-3/8	1	2.7	P.O.A.
700935	10 x 10	10-3/8 x 10-3/8	1	3.6	\$352.00
C700900	12 x 12	12-3/8 x 12-3/8	1	4.7	P.O.A.
C700900	16 x 16	16-3/8 x 16-3/8	2	7.6	P.O.A.
C700900	18 x 18	18-3/8 x 18-3/8	2	11.2	P.O.A.
C700900	24 x 24	24-3/8 x 24-3/8	4	18.0	P.O.A.

– E.&O.E. – May not be in stock at all branches, if so please allow 10 days for delivery. –
– All Prices F.O.B. Our Warehouse – Subject to Change Without Notice – All Taxes Extra –

ACUDOR ACCESS DOORS

www.acudor.com

FIRE RATED ACCESS DOOR FOR WALLS — FB-5060 — PRIME COAT STEEL

Description

The Acudor **FB-5060** is approved by Underwriters Laboratories (UL) for 1-1/2 hour "B" label in walls and ULC for 2 hour "B" label in walls. Designed to maintain continuity in a two hour fire barrier wall, the FB-5060 should be used whenever it is necessary to provide access in fire rated walls, when temperature rise is not a factor.

For drywall applications, this door is available with a galvanized steel drywall taping bead flange (FB-5060-DW).

Specifications

Material Steel or Stainless Steel: 16 ga. door, 16 ga. mounting frame.

Door Flush to frame with reinforced edges.

Frame Flange to be 1" wide, mounting frame to have anchor straps (optional).

Hinge Concealed.

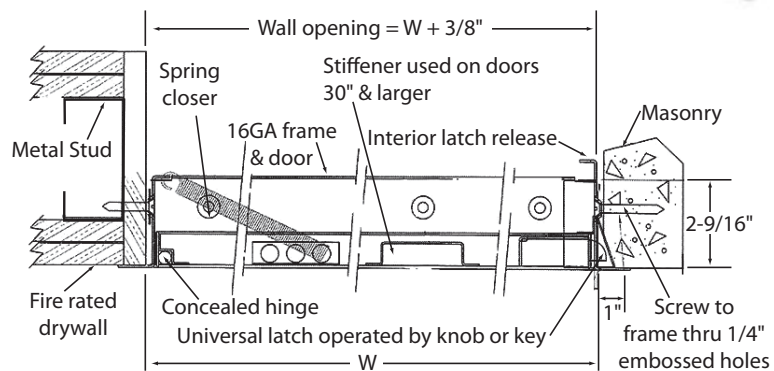
Fire Rating UL – 1-1/2 hour "B" label.
ULC – 2 hour "B" label.

Latch Universal self-latching bolt, operated by either a knurled knob or flush key. When master keying is required, doors can be prepared for rim cylinder locks or mortise cylinder locks.

Finish Steel: 5 stage iron phosphate preparation with prime coat of grey baked enamel.
Stainless Steel: #4 satin polish.



This door is available with a 2 hour ULC label.



STOCK #	NOMINAL W x H (")	OPENING SIZE (")	NO. OF LATCHES	WEIGHT (LBS)	PRICE/EA
700940	8 x 8	8-3/8 x 8-3/8	1	5.5	\$392.00
700941	12 x 12	12-3/8 x 12-3/8	1	8.3	410.00
700942	16 x 16	16-3/8 x 16-3/8	1	11.5	420.00
700943	18 x 18	18-3/8 x 18-3/8	1	14.3	569.00
700944	22 x 30	22-3/8 x 30-3/8	1	32.5	688.00
700946	24 x 24	24-3/8 x 24-3/8	1	20.3	661.00
700947	24 x 36	24-3/8 x 36-3/8	2	28.5	725.00
C770900	24 x 48	24-3/8 x 48-3/8	2	34.0	P.O.A.

– E.&O.E. – May not be in stock at all branches, if so please allow 10 days for delivery. –
– All Prices F.O.B. Our Warehouse – Subject to Change Without Notice – All Taxes Extra –

ACUDOR ACCESS DOORS

www.acudor.com

FIRE RATED ACCESS DOOR FOR WALLS AND CEILINGS — FW-5050 — PRIME COAT STEEL/STAINLESS STEEL

Description

The Acudor **FW-5050** is a fire rated access door for use in walls and ceilings. For walls, this door has a Underwriters Laboratories (UL and ULC), 1-1/2 hour "B" label, with a maximum temperature rise of 250° after 30 minutes. This door should be used in walls when temperature rise or heat transmission is a factor.

For fire rated ceilings, this door has been approved by Warnock Hersey International for three hours (max. size to 24" x 36").

For drywall applications, this door is available with a galvanized steel drywall taping bead flange (FW-5050-DW).

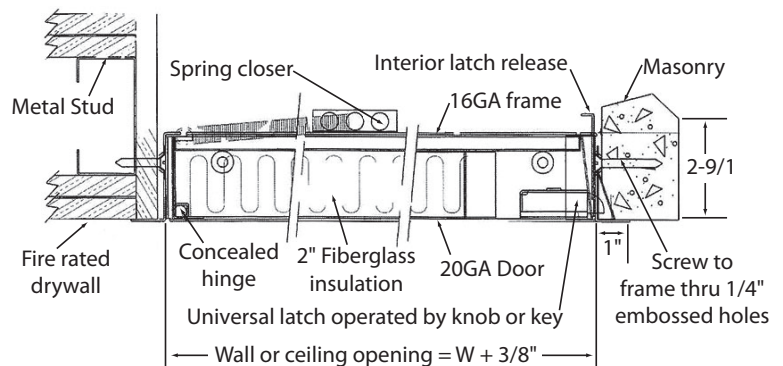


Specifications

- Material** Steel or Stainless Steel:
20 ga. door, 16 ga. mounting frame.
- Door** Filled with 2" thick fire rated insulation.
- Frame** Flange to be 1" wide, mounting frame to have anchor straps (optional).
- Hinge** Concealed.
- Fire Rating** Walls: UL and ULC – 1-1/2 hour "B" label, with 250° temperature rise.
Ceilings: Warnock Hersey International – 3 hours.
- Latch** Universal self-latching bolt, operated by either a knurled knob or flush key. When master keying is required, doors can be prepared for mortise or cylinder locks.
- Finish** Steel: 5 stage iron phosphate preparation with prime coat of grey baked enamel.
Stainless Steel: #4 satin polish.



This door is available with a 1-1/2 hour ULC label.



STOCK #	NOMINAL W x H (")	OPENING SIZE (")	NO. OF LATCHES	WEIGHT (LBS)	PRICE/EA
700960	8 x 8	8-3/8 x 8-3/8	1	11.0	\$520.00
700962	12 x 12	12-3/8 x 12-3/8	1	10.0	560.00
C700900	16 x 16	16-3/8 x 16-3/8	1	15.0	P.O.A.
700966	18 x 18	18-3/8 x 18-3/8	1	20.0	670.00
C700900	22 x 30	22-3/8 x 30-3/8	1	32.0	P.O.A.
700970	24 x 24	24-3/8 x 24-3/8	1	28.0	830.00
C700900	24 x 36	24-3/8 x 36-3/8	2	38.0	P.O.A.
C700900	24 x 48	24-3/8 x 48-3/8	2	48.0	P.O.A.

– E.&O.E. – May not be in stock at all branches, if so please allow 10 days for delivery. –
– All Prices F.O.B. Our Warehouse – Subject to Change Without Notice – All Taxes Extra –

ACUDOR ACCESS DOORS

www.acudor.com

RECESSED ACCESS DOOR — AT-5020

Description

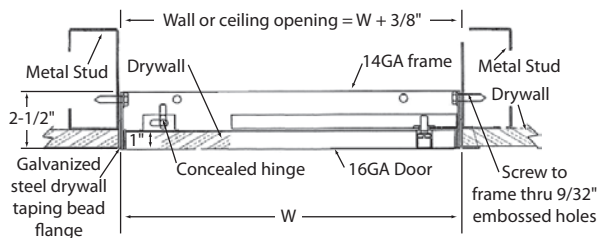
The Acudor **AT-5020** recessed access door is designed for flush installation in walls or ceilings when it is required to conceal the door panel, which is recessed. For use in acoustical ceilings, the Acudor AT-5020 is identical to the DW-5015, with the galvanized steel taping bead flange being omitted.



Specifications

- Material** Steel or Stainless Steel: 16 ga. door.
- Door** Recessed 1".
- Frame** 14 GA. Mounting Frame
- Hinge** Concealed, pivoting rod type.
- Latch** Flush to surface, screwdriver operated cam latch. Also available: cylinder lock and key, allen head cam latch, spanner head cam latch.
- Finish** Steel: 5 stage iron phosphate preparation with prime coat of grey baked enamel. Stainless Steel: #4 satin polish.

(Please refer to index for standard sizes.)



STANDARD SIZES SD-6000

(Special sizes available upon request)

STOCK #	NOMINAL DOOR SIZE W x H (")	CEILING OR WALL OPENING (")	WEIGHT PER DOOR SD-6000 (LBS)	PRICE/EA
C700900	12 x 12	12-3/8 x 12-3/8	22.0	P.O.A.
C700900	16 x 16	16-3/8 x 16-3/8	30.0	P.O.A.
C700900	18 x 18	18-3/8 x 18-3/8	46.0	P.O.A.
C700900	24 x 24	24-3/8 x 24-3/8	70.0	P.O.A.
C700900	24 x 36	24-3/8 x 36-3/8	90.0	P.O.A.
C700900	36 x 36	36-3/8 x 36-3/8	120.0	P.O.A.

SECURITY ACCESS DOOR — SD-6000

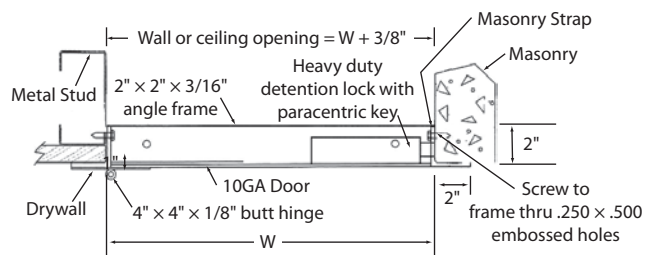
Description

The Acudor **SD-6000** is a heavy duty access door designed for use in high security areas. The angle frame construction and 10 gauge plate door panel makes this access door ideal for prisons, correctional facilities, housing projects, etc. Our standard security butt hinges are surface welded to the door and frame, allowing the door panel to operate freely. A detention type deadbolt lock with paracentric key is standard.



Specifications

- Material** Steel or Stainless Steel: 10 ga. door, 2" x 2" x 3/16" angle frame.
- Door** 10 gauge plate, flush to edge of frame.
- Frame** Flange to be 2" wide, mounting frame to have anchor straps.
- Hinge** Heavy duty butt hinges, welded to door and frame.
- Latch** Detention type deadbolt lock with paracentric key. Also available: tamperproof security cam latches, cylinder lock and key. When master keying is required, door can be prepared for rim cylinder locks.
- Finish** Steel: 5 stage iron phosphate preparation with prime coat of grey baked enamel. Stainless Steel: #4 satin polish.



- E.&O.E. - May not be in stock at all branches, if so please allow 10 days for delivery. -
- All Prices F.O.B. Our Warehouse - Subject to Change Without Notice - All Taxes Extra -

ACUDOR ACCESS DOORS

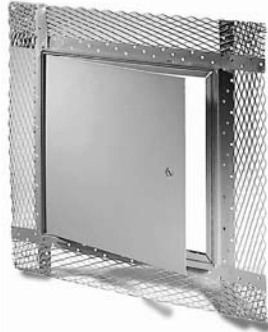
www.acudor.com

FLUSH ACCESS DOORS — PS-5030

Description

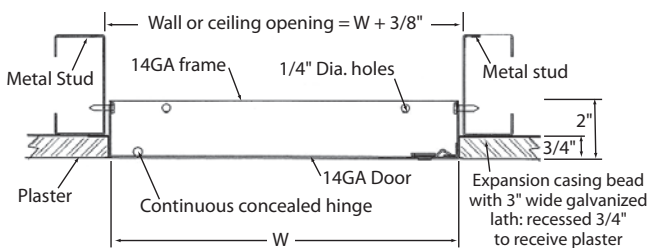
The Acudor **PS-5030** is designed for installation in plaster walls and ceilings, before the plaster is applied. An expansion casing bead with 3" wide galvanized lath, included as part of the frame, provides a clean, tight finish between the frame and plaster and also adds reinforcement. The door panel is finished flush with the plaster.

Our unique concealed bar hinge and screwdriver operated cam latches allow the door panel to operate freely with no binding, sagging, or distortion.



Specifications

- Material** Steel or Stainless Steel: 14 ga. door, 14 ga. mounting frame.
- Door** Flush to edge of frame
- Frame** Expansion casing bead with 3" wide galvanized lath, recessed 3/4" to receive plaster.
- Hinge** Continuous, concealed.
- Latch** Stainless steel screwdriver operated cam latch. Also available: cylinder lock and key, allen head cam latch, spanner head cam latch.
- Finish** Steel: 5 stage iron phosphate preparation with prime coat of grey baked enamel.
Stainless Steel: #4 satin polish.



FLUSH ACCESS DOORS — DW-5040

Description

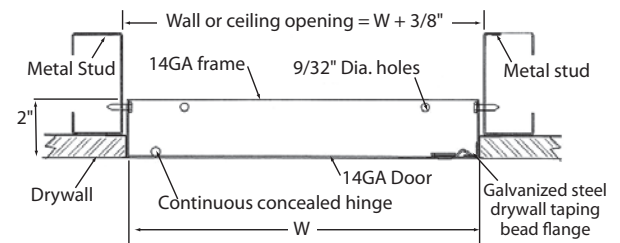
The Acudor **DW-5040** is designed for installation in drywall walls and ceilings after the drywall has been installed. The flange of the door is a textured galvanized steel taping bead with prepunched holes. Drywall compound is applied over the beading at the same time the drywall joints are finished. When the application is completed, only the door panel remains exposed.



Our unique concealed bar hinge and screwdriver operated cam latches allow the door panel to operate freely with no binding, sagging, or distortion.

Specifications

- Material** Steel or Stainless Steel: 14 ga. door, 14 ga. mounting frame.
- Door** Flush to edge of frame
- Frame** Galvanized steel drywall taping bead on all sides.
- Hinge** Continuous, concealed.
- Latch** Screwdriver operated cam latch. Also available: cylinder lock and key, allen head cam latch, spanner head cam latch.
- Finish** Steel: 5 stage iron phosphate preparation with prime coat of grey baked enamel.
Stainless Steel: #4 satin polish.



(cont'd on next page)

ACUDOR ACCESS DOORS

www.acudor.com

FLUSH ACCESS DOORS PS-5030 AND DW-5040 (cont'd)

STANDARD SIZES PS-5030 AND DW-5040

(Special sizes available upon request)

STOCK #	NOMINAL DOOR SIZE W × H (")	CEILING OR WALL OPENING (")	NO. OF LATCHES	WEIGHT PER DOOR (LBS)	PRICE/EA
C700900	6 × 6	6-3/8 × 6-3/8	1	3.0	P.O.A.
C700900	8 × 8	8-3/8 × 8-3/8	1	3.5	P.O.A.
C700900	10 × 10	10-3/8 × 10-3/8	1	4.5	P.O.A.
C700900	12 × 12	12-3/8 × 12-3/8	1	6.0	P.O.A.
C700900	14 × 14	14-3/8 × 14-3/8	1	7.5	P.O.A.
C700900	16 × 16	16-3/8 × 16-3/8	2	9.5	P.O.A.
C700900	18 × 18	18-3/8 × 18-3/8	2	11.5	P.O.A.
C700900	22 × 22	22-3/8 × 22-3/8	4	15.0	P.O.A.
C700900	24 × 24	24-3/8 × 24-3/8	4	19.0	P.O.A.
C700900	24 × 36	24-3/8 × 36-3/8	5	28.0	P.O.A.
C700900	30 × 30	30-3/8 × 30-3/8	5	27.5	P.O.A.
C700900	36 × 36	36-3/8 × 36-3/8	5	39.0	P.O.A.

– E.&O.E. – May not be in stock at all branches, if so please allow 10 days for delivery. –
– All Prices F.O.B. Our Warehouse – Subject to Change Without Notice – All Taxes Extra –

ACUDOR ACCESS DOORS

www.acudor.com

RECESSED ACCESS DOORS — AP-5010

Description

The Acudor **AP-5010** recessed access door is designed for use in acoustical plaster walls and ceilings. The door is recessed 5/8" and is lined with self-furring lath. An expansion casing bead with 3" wide galvanized lath, included as part of the frame, provides a clean, tight finish between the frame and plaster and also adds reinforcement.



Specifications

- Material** Steel or Stainless Steel: 16 ga. door, 14 ga. mounting frame.
- Door** Recessed 5/8" and lined with self-furring galvanized lath edges.
- Frame** Expansion casing bead with 3" wide galvanized lath, recessed 3/4" to receive plaster.
- Hinge** Concealed, pivoting rod type.
- Latch** Flush to surface, screwdriver operated cam latch. Also available: cylinder lock and key, allen head cam latch, spanner head cam latch.
- Finish** Steel: 5 stage iron phosphate preparation with prime coat of grey baked enamel.

RECESSED ACCESS DOORS — DW-5015

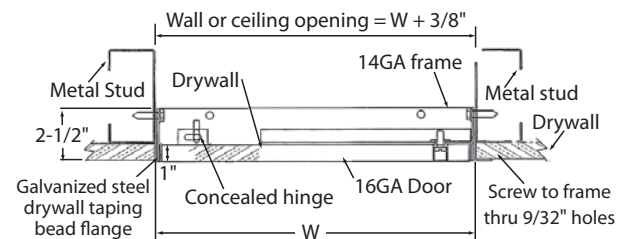
Description

The Acudor **DW-5015** recessed access door is designed for flush installation in drywall surfaces when it is required to conceal the door panel, which is recessed 1" to receive drywall. The flange of the door is a textured galvanized steel taping bead with prepunched holes. Drywall compound is applied over the beading at the same time the drywall joints are finished.



Specifications

- Material** Steel or Stainless Steel: 16 ga. door, 14 ga. mounting frame.
- Door** Recessed 1".
- Frame** Galvanized steel drywall taping bead on all sides.
- Hinge** Concealed, pivoting rod type.
- Latch** Flush to surface, screwdriver operated cam latch. Also available: cylinder lock and key, allen head cam latch, spanner head cam latch.
- Finish** Steel: 5 stage iron phosphate preparation with prime coat of grey baked enamel.
Stainless Steel: #4 satin polish.



STANDARD SIZES AP-5010 AND DW-5015

STOCK #	NOMINAL W × H (")	OPENING SIZE (")	NO. OF LATCHES	WEIGHT PER DOOR (LBS)	
				AP-5010 OR DW-5015	PRICE/EA
C700900	12 × 12	12-3/8 × 12-3/8	1	8.5	P.O.A.
C700900	18 × 18	18-3/8 × 18-3/8	2	15.0	P.O.A.
C700900	24 × 24	24-3/8 × 24-3/8	2	23.0	P.O.A.
C700900	24 × 24	24-3/8 × 24-3/8	2	23.0	P.O.A.
C700900	24 × 36	24-3/8 × 36-3/8	4	30.0	P.O.A.

– E.&O.E. – May not be in stock at all branches, if so please allow 10 days for delivery. –
– All Prices F.O.B. Our Warehouse – Subject to Change Without Notice – All Taxes Extra –